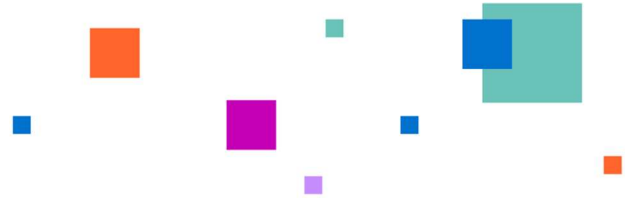


Date: 13th May 2026

Venue: Dean & Smedley. [65 Horninglow Rd, Burton upon Trent DE14 2PP](#)

Time: 10am to approx. 4:30pm

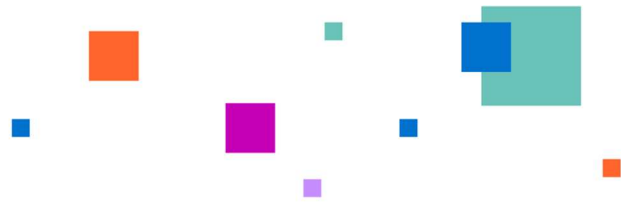
Arrival, coffee and conversations	10am (please arrive prompt by 10am)			
Business agenda				
<u>STANDING ITEMS</u> 10:30 – 11:45am				
Purpose - (I = Information, D = Discussion, U = Update)	Action	Enc	Lead	Status
<p>Welcome, apologies, Declarations of interests</p> <p>Observer – Donya Gerkondani - codsall pharmacy</p> <p>We welcome Contractors and Observers to the non-confidential sessions of our meetings.</p> <p><i>Where an elected or appointed member of the Committee has been absent from three consecutive ordinary meetings of the Committee to which the member was summoned, the Committee shall invite an explanation and declare the seat vacated, unless satisfied that the absence was due to reasonable cause. A member disqualified for non-attendance shall not be eligible to be appointed or elected to the Committee for the remainder of the Term of Office of the Committee.</i></p>	I		Chair	open
Vent, validate, vision – a safe space to share Discussion on current affairs			all	open
Approval of minutes from previous meeting and Competition Law approval	I	1	chair	open
Matters arising from previous minutes	I		chair	open
Review of action tracker		<u>TEAMS</u>	chair	open
<p>REPORTS</p> <ul style="list-style-type: none"> • Chairs <ul style="list-style-type: none"> ○ Forum of Chairs • Chief Officers <ul style="list-style-type: none"> ○ Meeting reports March/April ○ Media training ○ Clinical senate talk 		2 3a&b	Chair TC AH/TC	open



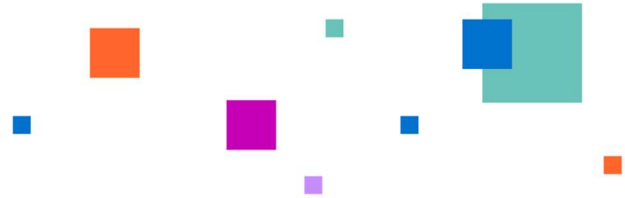
<ul style="list-style-type: none"> • Treasurers <ul style="list-style-type: none"> ○ Profit and loss ○ Corporation tax ○ Xero training ○ Annual finance report from Dain • Service Engagement's <ul style="list-style-type: none"> ○ Demonstration of CPE dashboard 			LI	
--	--	--	----	--

LOCAL BUSINESS - DISCUSSION ITEMS 11:45am – 2:30pm (including lunch)

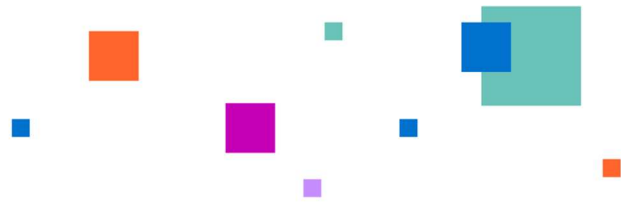
Abuse of pharmacy teams	I	4	TC	open
ICB & NHS update <ul style="list-style-type: none"> • SSOT 5yr commissioning plan • STW 5yr commissioning plan 	I	5a&b	LD/TC	open
Training events	I	6		open
Conference of LPC representatives	D	7	TC	open
Commissioners & Stakeholders (confirmed 12:45 Sam Travis)	D		ST	open
Lunch 1:15pm – 1:45pm				
Digital frontline productivity programme	D		TC	open
Sexual health services (Stoke) <ul style="list-style-type: none"> • Presenting at health Protection Forum • Update on LARC service 	D		TC	Open
Flu vouchers service	U		TC	open
LPN projects	U		TC	open
Urgent Treatment Centre referrals to PF service	D		TC	open
Neighbourhood health <ul style="list-style-type: none"> • National picture 		8a,b,c	TC	open



<ul style="list-style-type: none"> Local picture 				
<u>POLICY AND ADVISORY - INFORMATION ONLY 2.30pm - 2:40pm</u>				
<p>Summary of above papers (AI generated adapted)</p> <ul style="list-style-type: none"> a) Midlands Clinical Senate annual report b) MHRA safety round-up c) Patient safety update March/April d) Position statement: advanced level nursing e) UKHSA Syphilis Response Plan f) GPhC weight management review g) Please write to me – update h) PIF Health and Digital report <p>CPE - Our Meetings - Community Pharmacy England (cpe.org.uk)</p>	I	9 10a-h		open
<u>Closed Meeting 2:40pm – 2:50pm</u>				
<p>Market Entry</p> <ul style="list-style-type: none"> From 25th March 2026 the pharmacy at 42 Dunning Street, Tunstall, Stoke-on-Trent, Staffordshire, ST6 5AP will be operated by Secret Potions Ltd From 25th March 2026 the pharmacy at 9-15 Dunning Street, Tunstall, Stoke-on-Trent, Staffordshire, ST6 5AP will be operated by Secret Potions Ltd 30th March 2026 the pharmacy at 68 Caledonian, Glascote Heath, Tamworth, Staffordshire, B77 2ED will be operated by Kilcrona Ltd Change of ownership application for Morrisons Pharmacy (Burton On Trent) at Morrisons Supermarket Wellington Road Burton On Trent DE14 2AR by Pharmazen Healthcare Ltd. 	D	TEAMS	TC	closed
Confidential matters/issues	I		Chair/ TC	closed



<p>CCA questions</p> <p>Q2 LPC Focus Areas and Reporting Questions April - June 2026 Survey</p> <p>IPA questions</p> <p>1- How is your LPC holding CPE to account? What measures are being used?</p> <p>2- What KPIs is your LPC setting when it comes to measuring CPE performance?</p> <p>3- How does your LPC scrutinise CPE spending of contractor levies?</p> <p>4- LPCs fund CPE and as such it is not unreasonable for LPCs to ask what the CPE CEO and Executives' KPIs, and salary etc are to ensure accountability and knowledge of how the levies are being spent - has your LPC officially enquired this with CPE? What was the answer?</p> <p>5- Is your LPC being consulted via your regional rep on decisions being made at CPE regarding various matters—for example the recent decision by CPE not to get involved in supporting seeking legal advice about contractors dispensing at a loss? How are these decisions made and how is CPE ensuring contractors have a say in such matters?</p>	D		CCA members	closed
<u>Subgroup work 2:50 – 4.15pm (including comfort break)</u>				
<p>SWOT analysis and pre-mortem sessions</p> <ul style="list-style-type: none"> • Background information • SSOT & STW potential merger • NHSE coaches - long-term viability • Feedback and decision making 				closed
<u>END OF MEETING 4.15pm – 4.30pm</u>				
Review of actions	I		AH/TC	
AOB	D		Chair	
Confirm next meeting and next year's dates	I		chair	



Meeting effectiveness			Chair	
<ul style="list-style-type: none"> • Did we achieve the outcomes required? • Did we uphold the Nolan principles? • Any learning and how we can improve going forward. 				
close				

Date, times and venue for next LPC meeting

Date	time	Venue	chair
Wednesday 8 th July 2026	10am	Thea Pharmaceuticals	LD
Wednesday 9 th September 2026	10am	Dean & Smedley	LD
Wednesday 11 th November 2026	10am	Dean & Smedley	LD